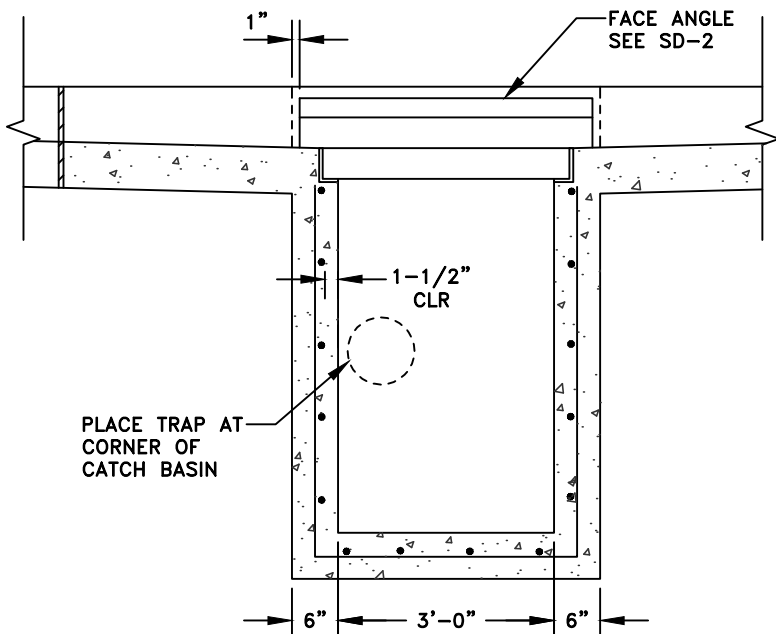
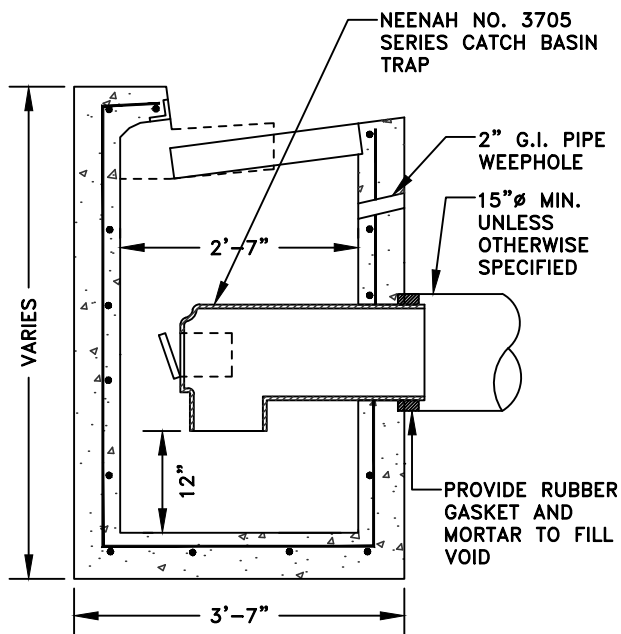


PLAN



SECTION A-A



SECTION B-B

NOTES:

1. CATCH BASIN TRAP AND CLEANOUT TO BE USED FOR COMBINED SEWER/STORM SYSTEMS (CSS).
2. FOR CATCH BASIN CONSTRUCTION, SEE SD-1 AND SD-2.
3. CATCH BASIN WITH TYPE I GUTTER IS SHOWN; TRAP INSTALLATION WITH TYPE II GUTTER IS THE SAME.
4. AS ALTERNATES, CATCH BASINS MAY BE PRECAST OR CAST-IN-PLACE UNITS BASED ON STATE TYPE "GO".



CITY OF DALY CITY, CALIFORNIA
DEPARTMENT OF PUBLIC WORKS

STANDARD
DETAIL

CATCH BASIN WITH TRAP AND CLEANOUT (CSS)

SD-3

REVIEWED BY: *Richard Chao Jr.* ADOPTED ON: DEC 10, 2018
CITY ENGINEER CITY COUNCIL

DATE: NOV 2018